



DESIGNED FOR LIVING

*we've got style in store*

EDITORIAL

SHOP

French-born designer Zoé Ouvrier is bringing nature into the home. Playing with light and dark, rough and smooth, her work is obviously inspired by wildlife, showcasing the delicate balance of it. Upscaling Plywood panels into luxury hand carved screens and artworks to relish and yearn for. Each piece unique and wonderful in it's own means. Ouvrier brings wood back to life by returning it to what it was meant to be, quite figuratively, trees bending and twisting in the wind. They need no introduction, they're larger than life and act as a centerpiece for everyone to "ooh" and "ah" at. Create a fantasy forest inside your home like ones only described in fairytales, that is if you can manage to get your hands on a piece. And if you do, mind telling us where?



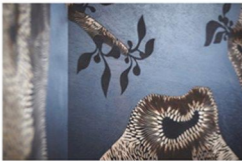


DESIGNED FOR LIVING

*we've got style in store*

EDITORIAL

SHOP





DESIGNED FOR LIVING

*we've got style in store*

EDITORIAL

SHOP

